



# Extraordinary Legacy, Uncompromising Expertise...

SINGAPORE | UAE | INDIA | BANGLADESH



## OUR STRENGTH

SUNMAS is one of the pioneer Engineering, Procurement, Construction (EPC) & Maintenance partner in Water treatment, Oil & Gas, Power and Petro chemical industries.



## OUR EXPERIENCE

With our extensive experience in undertaking various scale of projects since 2010 we have been delivering trademark services from our headquarters in Singapore. Our reputation has grown over a decade with highest benchmark of client satisfaction.



## OUR MISSION

Our mission is to provide excellent services that consistently meet our client's needs and expectations through excellence in our project management.

## OUR EXPERTISE



### ENGINEERING

We provide upgrading and replacement services to process system of existing water and waste water treatment plant, oil & gas terminals, petro chemical industries, power stations, pumping stations as well as in other industrial process plants.



### PROCUREMENT & LOGISTICS

We provide Engineering, Procurement and Construction services mainly in the field of water and waste water treatment plant, oil & gas terminals, petro chemical industries, power stations, pumping stations as well as in other industrial process plants.



### PROJECT MANAGEMENT

With our extensive 15+ years of experience in making successful clients we guarantee on delivering timely service without any compromise in safety and quality.



### MECHANICAL

Mechanical Installations and equipment Integration. Consultation services in Mechanical Design for utilities & process systems.



### ELECTRICAL & INSTRUMENTATION

Design and installation of instrumentation and control systems, including Panel System. Electrical System Design and Assembly, Systems Installation, commissioning, startup services and end-user training.

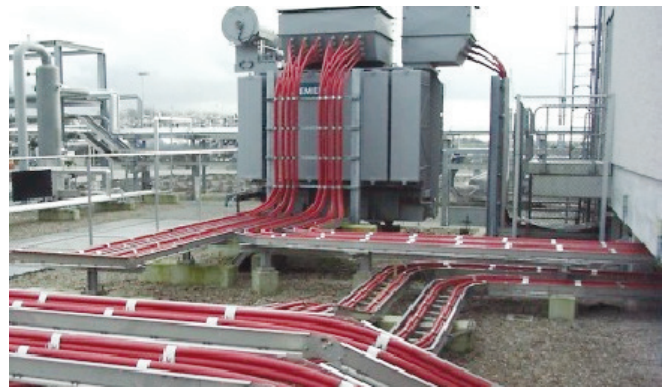


### INTEGRATED MAINTENANCE

We are specialized in plant Operation and Maintenance Services to ensure optimization in production 24/7. We are equipped to carry out corrective and preventive maintenance to ensure equipment in process are in tip top condition and minimize the downtime.

## Electrical and Instrumentation

The electrical & instrumentation systems power your plant so their design and installation are not something we should leave to chance. SUNMAS provides a full spectrum of electrical & instrumentation services required by the multinational companies in the various industries. Being a renowned specialist in the electrical & instrumentation fields for more than a decade, we offer full pledged EPC services; engineering & design, product procurement & installation, system integration services and testing & commissioning services for Process Control Systems, Extra-Low Voltage (ELV) Systems, Analyzer Houses, Fire Fight Systems, Heating, Ventilation & Air-Conditioning (HVAC) Systems and Pre-fabricated Substations.





## Mechanical

We love the design engineering phase, but get an extra kick out of seeing it all come together. Leveraging on our pool of skilled craftsmen and specialists supported by a strong management team, the team is able to deliver high quality & cost effective results on time to the satisfaction of our clients from start to finish.

As a one-stop solution service provider, we are capable of providing mechanical construction services such as fabrication and installation works for structural steel & piping, and installation of rotating, static & package equipment either independently or as part of a multi-disciplined approach.

## Integrated Maintenance Turn-around and Shutdown

Whether it is ongoing support for a complete turn around project or a retrofit project for an existing plant, SUNMAS is equally committed to delivering dependable maintenance solutions to keep your structures in operational order, thereby extending the life span of your investment. Our expert team will oversee maintenance planning and scheduling that meets the needs of your individual requirements.

This includes regular scheduled maintenance or predictive and preventive maintenance to extend the life of your plant; turnaround and shutdown maintenance as required; and even daily and facilities maintenance. The scope of maintenance works includes equipment installation, piping works, structural works, electrical works, instrumentation and controls, tankage maintenance, static equipment maintenance, exchanger bundle pulling and repair, rotating equipment servicing and overhauling, scaffold and insulation, and reliability engineering services.



## Our Advantages

### Asia & United Arab Emirates Work Force Ready, Anytime, Anywhere

Our projects take place around the world so we have to be able to mobilise the right people where they are needed with greatest speed and highest efficiency level. Our Asia & United Arab Emirates Work Force allow us to do just that. Through Global Work Force we have grown our own team who are readily deployed anywhere in the world and attuned to our brand of service and delivery.

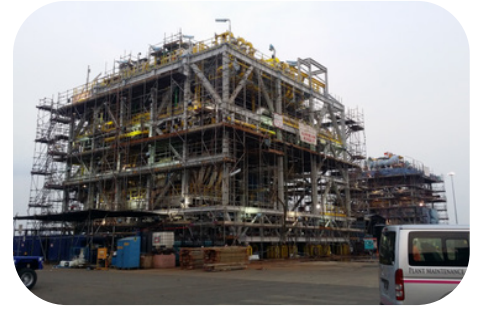


## Safety & Quality

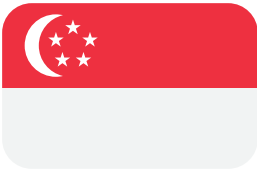
### It's Always People First

We take care of our people. That's why we insist on the most stringent of safety processes at every stage of construction. Through direct employment and regular safety training courses, we are better able to control quality and work in a safe working environment. We commit to the highest standards of regulatory practices, because protecting our stakeholders and assets are our top priority. Our people know that it's smart to work safe.

## OUR PROJECTS



## GLOBAL PRESENCE



### **SUNMAS TECHNOLOGIES PTE LTD**

1 SOON LEE STREET, PIONEERCENTRE, #02-27  
SINGAPORE-627605  
Email: sales@sunmasgroup.com  
Ph: +65 98509721



### **SUNMAS ENGINEERING & CONSTRUCTION L.L.C**

Dar Al Salam Tower Al Danah, Abudhabi  
Email: sales@sunmasgroup.com  
Ph: +971 551432097



### **SUNMAS TECHNOLOGIES PVT LTD**

No.11/12 (B12/3), Besant Nagar 25th Cross Street,  
Besant Nagar, Chennai - 600090.



### **SUNMAS PVT LTD**

Uttara Tower, Level 4  
1 Jashimuddin Avenue, Sector - 03, Uttara C/A  
Dhaka 1230, Bangladesh.

